

EASY sit-stand desks



FEATURES

- Equipped with two motors
- Two types of lifting columns – Linak DL15 and Linak DL16
- Telescopic frame
- Two types of feet to choose from

QUALITY STANDARD

- LST EN 527-1:2011
- LST EN 527-2:2002
- LST EN 527-3:2003
- ISO 21016:2007

TECHNICAL INFORMATION

Desktop

- 25 mm MFC (melamine) with 2 mm ABS edging;
- With or without a cut-out for grommet and wire management;
- With or without a scallop for wire management.

Desk control button types

- BA, TE, TA – up and down drive;
- MA – up and down drive and 3 memory positions;
- LA – up and down drive, 2 memory positions, automatic drive on memory positions, LED reminder, integrated Bluetooth.



BA



TE



TA



MA



LA

Adjustable telescopic frame

- Side support steel L shape 50x30x460 mm;
- Square steel pipe 50x25x554 mm;
- Steel pipe part for adjustment 40x20x920 mm;
- Adjustment range – 600 mm;
- Powder coated metal, matches the colour of columns and feet.

Lifting columns

- Types: two (2) or three (3) level columns;
- Integrated anti-collision sensor PIEZO for three (3) level columns, optional anti-collision sensor for two (2) level columns;
- Two motors;
- Soft start and soft stop;
- Lifting speed: up to 38 mm/ sec;
- Stroke length: DL15 / DL16 – 500 / 650 mm;
- Rectangular tube dimensions: DL15 / DL16 – 43,5x73,5 mm, 37x67 mm / 50x80 mm, 43,5x73,5 mm, 37x67 mm;
- Lifting capacity: 120 kg;
- Powder coated metal, matches the colour of frame and feet.



DL15 (2)



DL16 (3)

Types of feet

Type W



- Metal sheet 700x70x30 mm with welded profile for stability;
- Plastic feet with height levelling (+10 mm);
- Powder coated metal, matches the colour of frame.

Type I

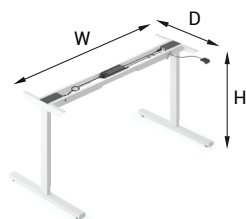


- Metal tube – 796x60x30 mm;
- Plastic feet with height levelling (+10 mm);
- Powder coated metal, matches the colour of frame.

Electronic data power unit

- Input: 230 V (or 120 V for US market);
- Frequency: 50 Hz (or 60 Hz for US market);
- Output: 12 – 40 V, 9A;
- Power Plug: EU, UK, CH, US;
- Energy consumption: standby 0,01 W;
- Operating Cycle: 1 minute on, 9 minutes off;

RANGE



W 1116-1716
D 700, 800
H 680-1180



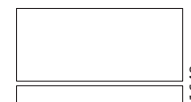
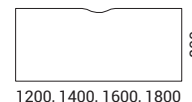
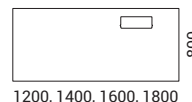
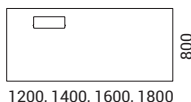
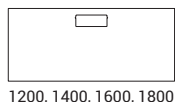
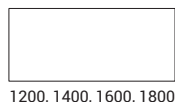
W 1116-1716
D 700, 800
H 585-1235



W 1116-1716
D 1368
H 680-1180



W 1116-1716
D 1368
H 585-1235

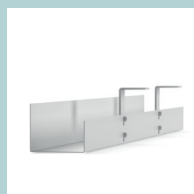


Must be ordered (for desktops with cut-out)



Metal grommet:
317x119 mm,
H=27 mm

Optional



Cable trays



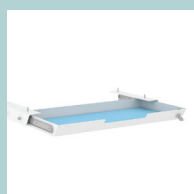
Power socket
blocks



Cable ducts



Screens



Felt-lined metal
drawer with lock



App control via
Bluetooth (iOS,
Android)



Anti-collision
sensor

ADDITIONAL INFORMATION

Anti-collision technology

- Minimizes the risk for damages on a desk caused by squeezing or blocking of obstacles in up and down direction.



Things to be aware of:

- Does not work if the collision happens during the initialization phase;
- If the collision happens within the 1st sec of use or after the button on the control unit has been released, it will not work;
- If the collision happens over too long time and with the very soft object, it will not work.