

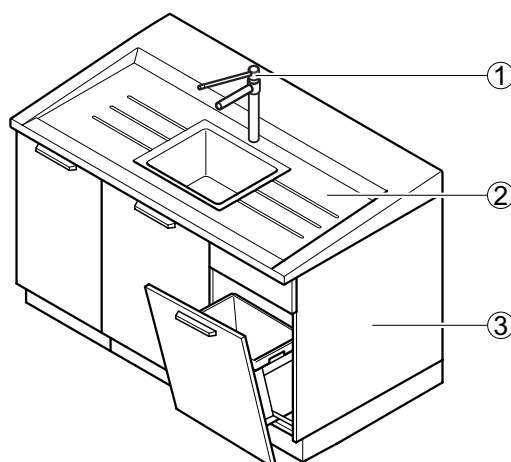
## Laboratory sinks

### Laboratory sink module

#### Intended use

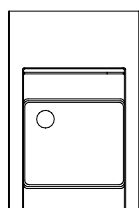
- Water supply and disposal
- For cleaning operating equipment
- To take up large amounts of water
- For installation on special underbench units
- Not suitable for the disposal of chemicals

#### Design

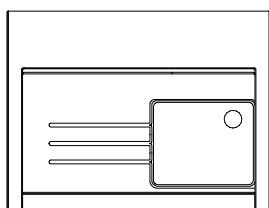


- 1 Outlet  
2 Sink module  
3 Underbench unit (3-piece)

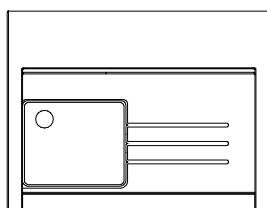
#### Variants



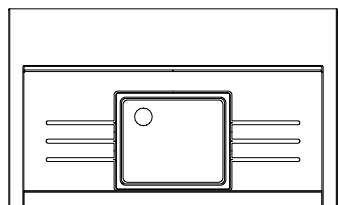
600



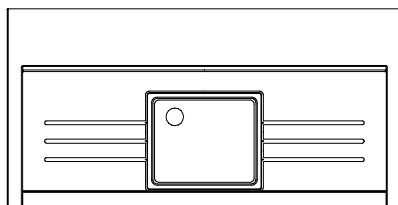
1200



1200



1500



1800

## Laboratory sinks

### Laboratory sink module

#### Technical data

Dimensions				
Width, sink module [mm]	600	1200	1500	1800
Depth, sink module for wall bench with service spine [mm]	675 or 825			
Depth, sink module for double bench with service spine [mm]	705 or 855			
Depth, sink module in front of building wall [mm]	760 or 910			
Depth, sink module as an end sink [mm]	–		740	
Overall height, sink module with underbench unit [mm]	910 front to 950 rear			
Sink dimensions, width x depth x height [mm]	460 x 390 x 250			
Height, edge of sink [mm]	20 front to 50 rear			

Material	
Sink module	Stoneware

Design characteristics	
Construction	Self-supporting moulded draining area Surrounding increased edge
Modular design	Different underbench units possible As end sink with special underbench unit

Sanitary technology	
Water connection	Permanent connection
Waste water connection	Permanent connection with siphon
Water fitting (tap)	Bench-mounted service outlets as an option
Eye shower	Optional