

DV-III Ultra Rheometer

...for measuring viscosity and yield stress!

The "all-in-one" tool to easily predict a material's complete flow behavior

Displayed info:

- Viscosity (cP or mPa·s)
- Temperature (°C or °F)
- Shear Rate/Stress
- % Torque
- Speed/Spindle
- Step Program Status
- Math Model Calculations

2600 Speeds

to characterize a wide range of flow behavior

Built-in RTD Temperature Probe

Accuracy: $\pm 1.0\%$ of range
Repeatability: $\pm 0.2\%$



Bi-directional RS-232 PC interface provides optional computer control and automatic data gathering capability

Download custom test programs with Rheolader software (included with instrument)

Complete computer control using optional Rheocalc32 software lets you control all aspects of rheological testing directly from the computer

Analyze characteristics such as yield stress, flow curves, (mixing, pumping, spraying), leveling and recovery

Stand-alone programming: Enter test method steps, temperature requirements, start program, see results on built-in display

Built-in math models for data analysis in stand-alone mode. E.g. Casson, Bingham, Power Law

VISCOSITY RANGE cP(mPa·s)

SPEEDS

MODEL	Min.	Max.	RPM	Number of Increments
LVDV-IIIU	1 [†]	6M	.01-250	2.6K
RVDV-IIIU	100 ^{††}	40M	.01-250	2.6K
HADV-IIIU	200 ^{††}	80M	.01-250	2.6K
HBDV-IIIU	800 ^{††}	320M	.01-250	2.6K

[†] 1 cP achieved with UL Adapter accessory. 15 cP on LV with standard spindles.
^{††} Minimum viscosity is achieved with optional RV/HA/HB-1 spindle.
M = 1 million K = 1 thousand cP = Centipoise mPa·s = Millipascal/seconds

BROOKFIELD VISCOMETERS

United States: T: 800.628.8139 or 508.946.6200 F: 508.946.6262 www.brookfieldengineering.com
United Kingdom: T: 01279 451774 F: 01279 451775 www.brookfield.co.uk

What's Included?

Instrument
 6 spindles (RV/HA/HB)
 or 4 spindles (LV)
 RheoLoader software ▶
 EZ-Yield Software ▶
 RTD Temperature Probe
 Spindle Guard Leg*
 Lab Stand Base
 Carrying Case

*Not applicable to HA or HB versions

Optional Accessories

Rheocalc32 Software ▶
 NEW Ball Bearing Suspension
 Viscosity Standards
 RV/HA/HB-1 Spindle
 Temperature Bath
 Small Sample Adapter
 UL Adapter
 Thermosel
 Helipath Stand with T-bar Spindles
 Spiral Adapter
 DIN Adapter
 Quick Connect/Extension Links
 Vane Spindles



DV-III Ultra CP

The DV-III Ultra is available in a Wells/Brookfield Cone & Plate Version

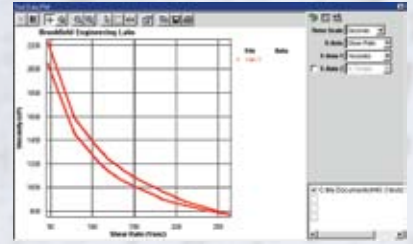


Brookfield Engineering Laboratories, Inc.
 11 Commerce Boulevard
 Middleboro, MA 02346-1031 USA
 T: 800.628.8139 or 508.946.6200 F: 508.946.6262
 W: www.brookfieldengineering.com

RheoLoader Software *Included*

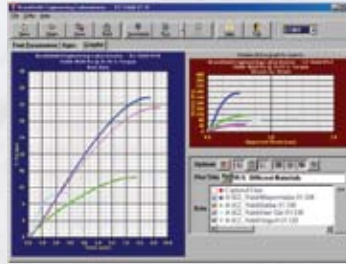
Customize your test criteria for routine product QC

This exclusive Brookfield software allows you to create customized programs for your instrument, each with as many as 50 commands. Once a program is downloaded from a host computer, comprehensive viscosity tests can be run automatically in stand-alone mode.



EZ-Yield Software *Included*

Yield tests can be performed with EZ-Yield software and vane spindles.



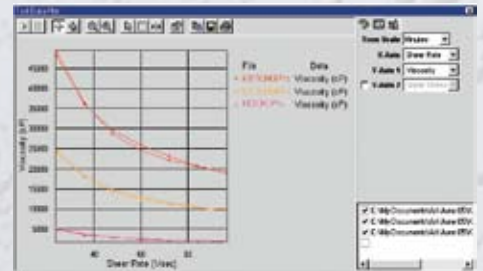
EZ-Yield Test Plots for Multiple Samples

	TORQUE RANGE		SHEAR STRESS RANGE	
			Pa	dyne/cm ²
LV	Contact Brookfield			
RV	.5-100		5-1K	
HA	1-200		10-2K	
HB	4-800		40-8K	
5xHB	20-4K		200-40K	

Rheocalc32 Software *Optional*

Get total control of your instrument and test parameters

Automatically control and collect data with Rheocalc32 and a dedicated computer. Rheocalc32 can analyze data, generate multiple plot overlays, print tabular data, run math models and perform other time-saving routines. Data can be saved in the program or exported to Excel.



Applications

Consider application and viscosity range when selecting model (LV, RV, HA, HB)

LV SERIES – LOW VISCOSITY

Adhesives (solvent base)
 Biological Fluids
 Chemicals
 Dairy Products
 Inks
 Juices
 Oils / Solvents
 Pharmaceuticals
 Polymer Solutions

RV SERIES – MEDIUM VISCOSITY

Adhesives (hot melt)
 Asphalt (SHRP)
 Ceramic Slurries
 Food Products
 Gums
 Ointments / Creams
 Paints / Inks / Coatings
 Paper Pulp
 Shampoos / Lotions

HA/HB SERIES – HIGH VISCOSITY

Caulking Compounds / Putty
 Chocolate
 Epoxies
 Inks (ballpoint, offset, lithographic)
 Pastes
 Peanut Butter
 Roofing Compounds
 Sealants
 Tars